



Minerals Industry Safety Council

MinEx – Safe Mines and Quarries

Les McCracken - CEO MinEx

17 July 2014

les@straterra.co.nz



NZ Mining Industry Sector Serious Harm Rates

- Quarry sector

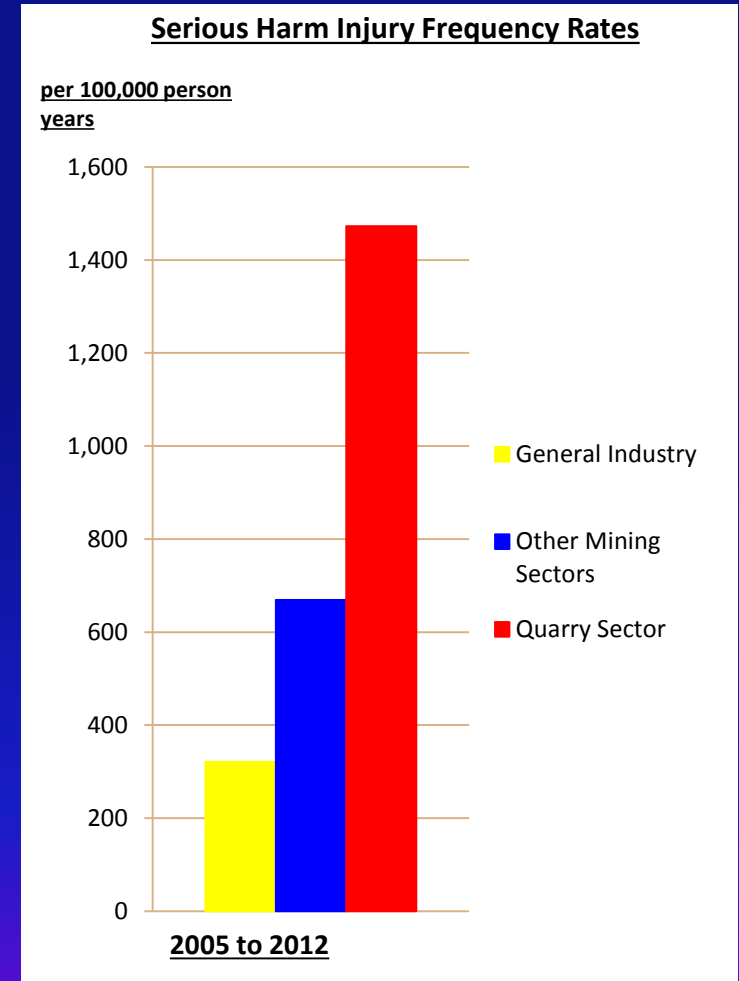
Injury rate = **5X** that of general industry

- Other Mining sectors

Injury rate = **2X** that of general industry

- Quarry sector

Injury rate = **2X** that of Mining industry



So what does that mean for the Quarry sector?

- ❑ Health & Safety Reform Bill 2014 commencement Apr 2015
- ❑ The Bill's regulations in the form of policy out for submissions
- ❑ Quarry & alluvial sector regulations 2016 or later
- ❑ Surface Mining Guidance currently out in draft form

What are the prerequisites for best practice health & safety performance?

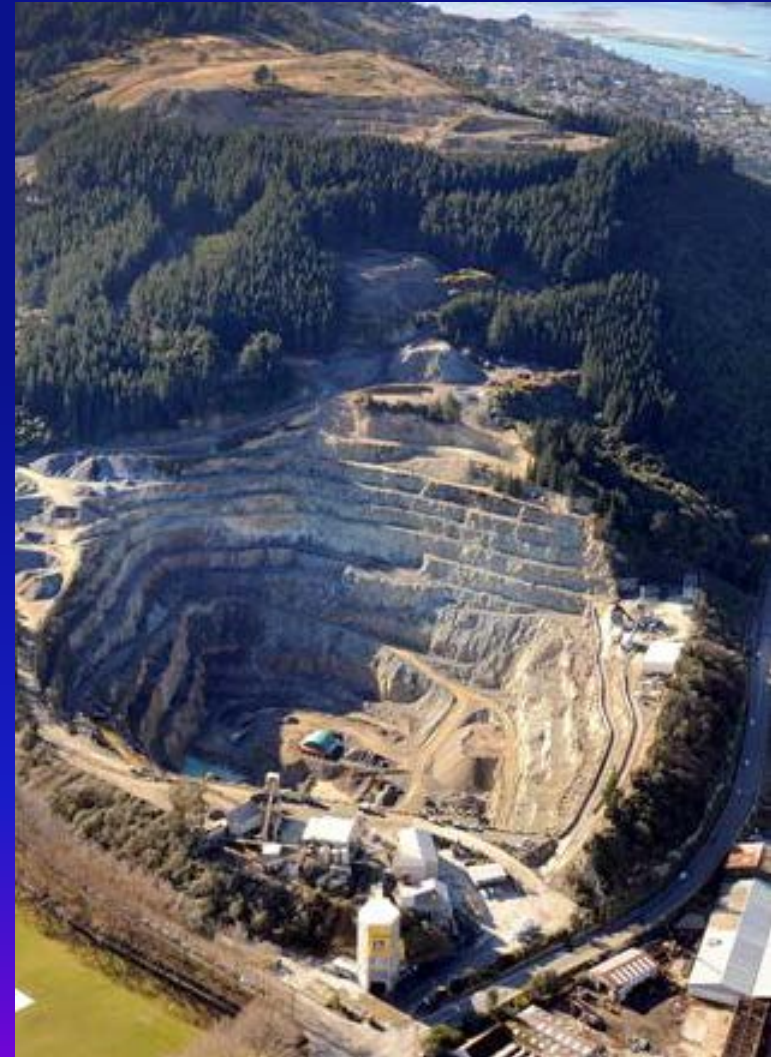
- Good, workable law
- An effective regulator
- Strong, visible leadership
- A robust level of capacity & capability
- Tripartism throughout the system
- Genuine & effective worker participation

What are the prerequisites for best practice health & safety performance?

- Incentives that promote good practice
- High-quality data
- Occupational health is taken seriously
- Small businesses have easy access to useful information
- High-risk population groups are targeted effectively
- Major hazards are regulated effectively
- A workplace culture that is more risk aware

Changes to MinEx to cope with change - 2013

- ❑ Prior to 2013 the MinEx budget was about \$35,000/year
- ❑ The 2012 King report identified the need for change
- ❑ 2013 extra funding of **\$100,000**
- ❑ Contract CEO retained



Why MinEx?

- ❑ Many surface mining activities are common across all sectors
- ❑ Therefore we need to deal with regulations, codes and guidance in a consistent manner
- ❑ Only MinEx can achieve this

The new MinEx – why?

- ❑ To consolidate the momentum built during 2013
- ❑ To assist with 2013 regulations compliance by 1 Jan 2015
- ❑ To assist with improvements in health & safety performance beyond 2014
- ❑ use this experience to assist the quarry & alluvial sectors to address change
- ❑ Beyond 2015, to provide assistance to these sectors on compliance, performance improvement & code & guidance development

The new MinEx – current status

- New board structure agreed
- Draft business plan agreed to allow work to start while the new structure was implemented
- New draft constitution developed
- Contract CEO retained
- AGM to ratify changes in September but operating now as if these were in place and assisted by legal advice to ensure compliance

The new MinEx – a value proposition

- Deliver value to members to build support
- Support means continued funding beyond year 1
- My contract is for 12 months and will be reviewed by the MinEx Board prior to expiry

New MinEx Board Structure

- ❑ Straterra = 2
- ❑ AQA = 2 (Chair & deputy chair of AQA)
- ❑ IOQ NZ branch = 1
- ❑ AusIMM NZ branch = 1
- ❑ Contractors Federation = 1
- ❑ EPMU = 1
- ❑ 1 position held vacant

The New MinEx

- ❑ Chairperson Chris Baker - subject to annual re-election

- ❑ MinEx operates out of the Straterra office in Wellington
 - Close to Worksafe
 - Close to the policy maker - MBIE
 - Close to Government

MinEx 2014 & beyond – goals

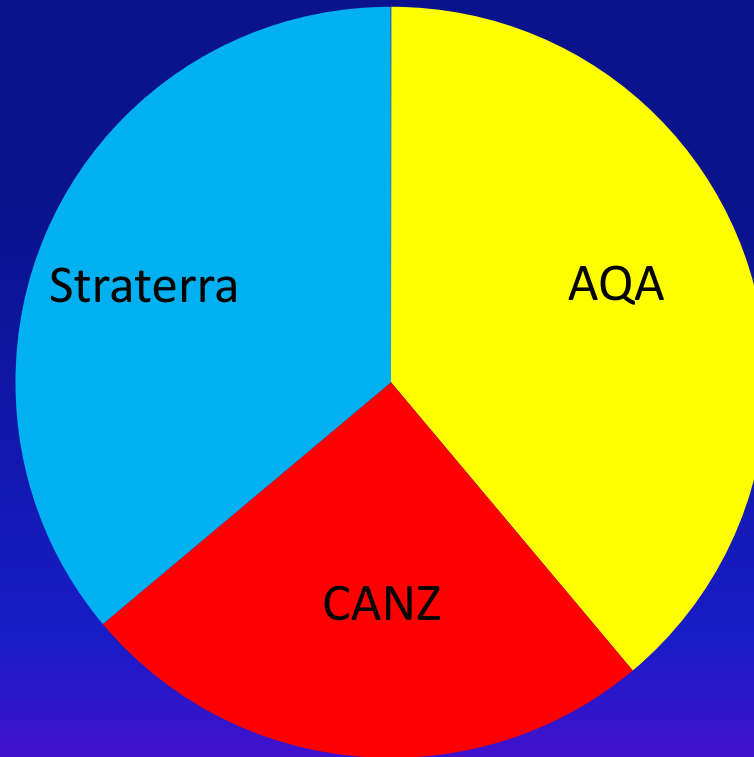
- ❑ Goal 1 - Reduction in fatality & injury rates by 2020:
 - Target fatality rate zero,
 - Target injury rate reduced by 25%

- ❑ Goal 2 - Legislation reform fit for purpose

- ❑ Goal 3 - Improve public perception of H&S in our industry

MinEx 2014 & beyond - funding

MinEx Funding 2014



MinEx 2014 & beyond – Services

- For all sectors:
 - Chair the Governance & Surface Mines groups of the Extractives qualifications review
 - Expert input to codes, most of which carry implications for the quarry sector
 - Maintain relationships with WorkSafe & especially the Inspectorate
 - Expert surface mine input to the Extractive Industry Advisory Group which advises the WorkSafe board
 - Look after the industry's interest in the development of the H&S Reform Bill 2014 & it's associated regulations

MinEx 2014 & beyond

- For the quarry sector:
 - Compliance assistance during 2015 to 2016
 - Expert input to surface mine code & guidance development:
 - Tips, lagoons & voids, roads & traffic, explosives, electrical, mechanical, emergency response
 - Ongoing health & safety performance improvement activities

MinEx 2014 & beyond - services

- For other sectors:
 - Continue with code & guidance development:
 - Ground control, Air quality, Worker health, Survey, Inundation & Inrush, Spontaneous Combustion, Hydro-mining, surface mine guidance
 - Ongoing compliance assistance
 - Ongoing health & safety performance improvement activities

Questions



Quarry ?

Gold mine ?



Certificates of Competency

- ❑ Quarries are covered by the 2013 regulations
- ❑ New competencies required:
 - Risk management, human factors, safety management systems, coordinated incident management systems & emergency management
- ❑ Compliance actions are split into two categories:
 - Existing Holders of CoCs who were statutory managers on 16 Dec 2013
 - New Applicants for CoCs
-

Certificates of Competency – Existing holders

- ❑ Existing Holders of CoCs who were statutory managers on 16 Dec 2013:
 - Reg 11 of Schedule 1 applies
 - Hold a time limited CoC then by the earliest of 12 months after the CoC expiry date or 1 Jan 2016 they need to have upgraded their CoC.
 - If they have no time limit then they have until 1 Jan 2016 to upgrade their CoC.

Certificates of Competency – new applicants

- New Applicants for CoCs
 - Reg 16 of Schedule 1 applies
 - If you applied for a CoC prior to 1 Jan 2015 then it is dealt with under the old regulations except that it will expire on 31 Dec 2015
 - Before 31 Dec 2015 you will need to apply for a renewal which will be under the new regulations
 - In 2014, the Board of Examiners will set the new requirements for CoCs consisting of the new competencies
 - Before the CoC holder applies for their replacement CoC they will need to have picked up the new competencies.

Certificates of Competency – continuing professional development

- ❑ The Board of Examiners can set additional new requirements for CoCs consisting of experience levels & continuing professional development requirements
- ❑ Once the Board has set these requirements they will need to be met by those renewing their CoC & could be tested at the time of renewal
- ❑ All certificates issued after 16 Dec 2013 will have a term of 5 years
- ❑ Life-time certificate holders are subject to the continuing professional development requirements & could have their CoC cancelled by the Board if they do not comply

Certificates of Competency – Board decisions

- The Board needs to make certain decisions before 1 Jan 2015
 - The content of the new competencies
 - Experience required for the various CoCs
 - The continuing professional development requirements
 - What CoC holders might be required to submit to an oral examination
 - How they will manage professional development requirements for life-time CoC holders

Board of Examiners

Membership of Board

1. WorkSafe may at any time appoint a member of the Board.
2. The appointment of a member of the board must be for a specified period.
3. WorkSafe must appoint one of the members of the Board as the chairperson of the board.

Board of Examiners

Membership of Board con'd

4. When appointing a member of the Board, WorkSafe must have regard to the need to ensure that the Board has among its members knowledge and experience of—
 - a. mining operations:
 - b. health and safety inspection in the mining industry:
 - c. mining education:
 - d. mining industry training.

5. Without limiting subsection (4), the Board may include 1 or more employees of WorkSafe.