

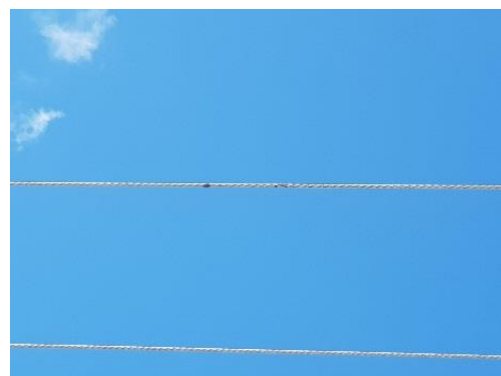
SERIOUS INCIDENT ALERT

SERIOUS INCIDENT	Near Miss - Potential Level 4
SUBJECT	Excavator Arm Contacts an 11kV Overhead Powerline
INCIDENT DATE	21/01/2019
BUSINESS UNIT	

1. WHAT HAPPENED?

A 23T excavator was being utilized to lift and move a concrete box culvert. While moving it to the installation location it was maneuvered under 11kV overhead power lines. The excavator arm made a contact with one of the lines. This caused a fault on the power network that affected some neighboring properties.

The excavator operator and the spotter were unaware at the time that the arm had made contact with the line.



2. WHAT DID YOU DO ABOUT IT?

- The distribution supervisor working on the project at the time supervising the electrical works, confirmed that the fault to the network was caused by the excavator striking power line (weld marks on excavator arm).
- Incident Notifications made
- ICAM investigation commenced.

3. WHAT DO YOU NEED TO DO TO PREVENT IT NEXT TIME?

- Planning and Risk Assessment must identify Overhead Powerlines as a risk and have documented controls in place.
- If required to work within 4 metres of a power line a close consent permit must be obtained from the utility owner and fully comply with all specific requirements outlined in the permit.
- All overhead powerlines in Work location must be protected/Marked. (Goalposts/Bunting/Flagging).
- Select appropriate Plant to eliminate the risk of striking overhead services.
- Treat all service as live.