



REGISTER TODAY TO RECEIVE THE LATEST UPLOADS



Login Register Information



INCIDENT ALERT

LOCATION:	QUARRY	ALERT STATUS:	Normal
ACTIVITY:	PRODUCTION AND PROCESSING	DATE ISSUED:	05/07/2011
SUB ACTIVITY:	AGGREGATE PROCESSING	INCIDENT No:	00291

TITLE

Chassis Failure Komatsu 350 Dumper

ACCIDENT / INCIDENT DETAILS

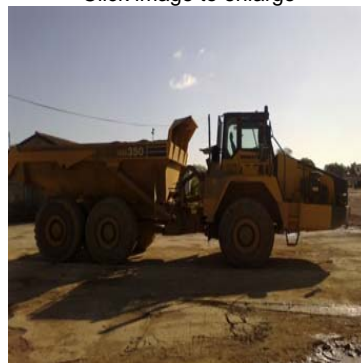
The quarry operates a number of articulated dumptrucks; one of which is a Komatsu 350. This vehicle was acquired new in 2004.

While conducting his normal daily duties, the driver noticed that the bonnet to the engine was not sitting properly and parked up the truck to check. He reported the issue to his supervisor who in turn contacted the plant Manager.

An inspection of the dumper was undertaken and it was discovered that the near-side tractor unit chassis had a large split running through it. This made the vehicle un-safe and it was immediately taken out of service.

ACCIDENT / INCIDENT IMAGES

Click image to enlarge



Plant

LEARNING POINTS / ACTIONS TAKEN

Recommendations:

- Pressure wash and conduct a thorough chassis inspection of all Komatsu HM 350 and HM400 dumpers.
- A known indicator of this problem is a widening of the gap where the battery box abuts the wheel arch.
- Where there is any doubt contact John Taylor, Product Support Manager at Marubeni Komatsu, who will arrange for a service engineer visit. (Editors note: Other company's may need to make their own arrangements for a specialist inspection).

LEARNING POINTS / ACTIONS IMAGES

Click image to enlarge



Split Chassis

[Request Futher Information](#)

[Go back to search criteria](#)

The Mineral Products Association hereby grant visitors to this website access to these pages conditional upon your agreement to indemnify us ar us liable for the result of any actions you may take based on the information contained herein. While every effort is made to ensure the accuracy content of this website, this cannot be guaranteed. [Click here](#) for full terms.