

Resources Safety and Health Newsflash

Explosion protected diesel engine exhaust conditioner corrosion

Purpose

Draw attention to the occurrence of a serious incident(s) in the mining industry.

Increase Risk awareness.

Encourage mines to examine and check that their controls are adequate.

What happened?

Internal inspections of a number of exhaust conditioner inlets have shown reduced integrity over time from corrosion and/or cracking of the internal gussets that support the exhaust inlet pipe (see figure1 below).

After the gussets crack, they no longer support the welded connection between the inlet pipe and the lid. The weld in this location, which separates the inlet exhaust gas from the outlet conditioned exhaust gas, can crack from lack of support.

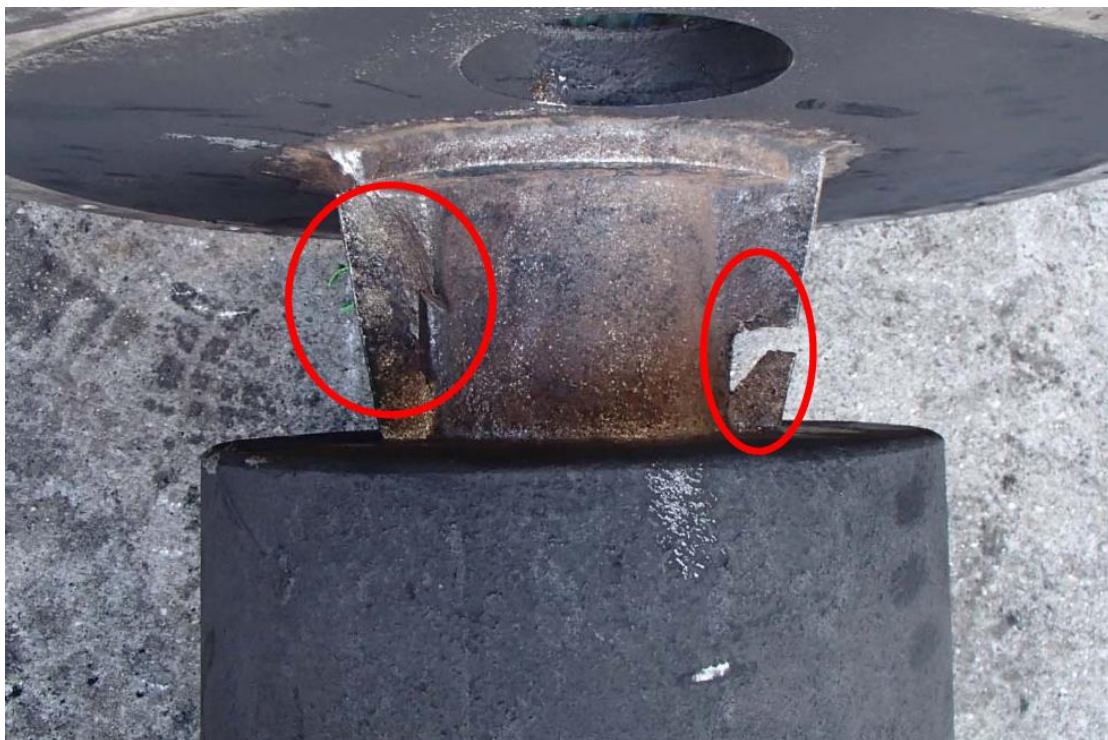


Figure 1 - Inlet assembly showing cracks and breaking off

Site senior executives should

- Audit explosion protected engine exhaust conditioners to identify if this failure is present.
- Consult with the OEM's or service providers to ensure that the correct maintenance procedures and replacement parts are available.

Investigations are ongoing and further information may be published as it becomes available. The information contained in this publication is based on knowledge and understanding at the time of writing.

Michael Scully – Inspector of Mines
11 June 2020

Michael.Scully@dnrme.qld.gov.au
0459 878 917