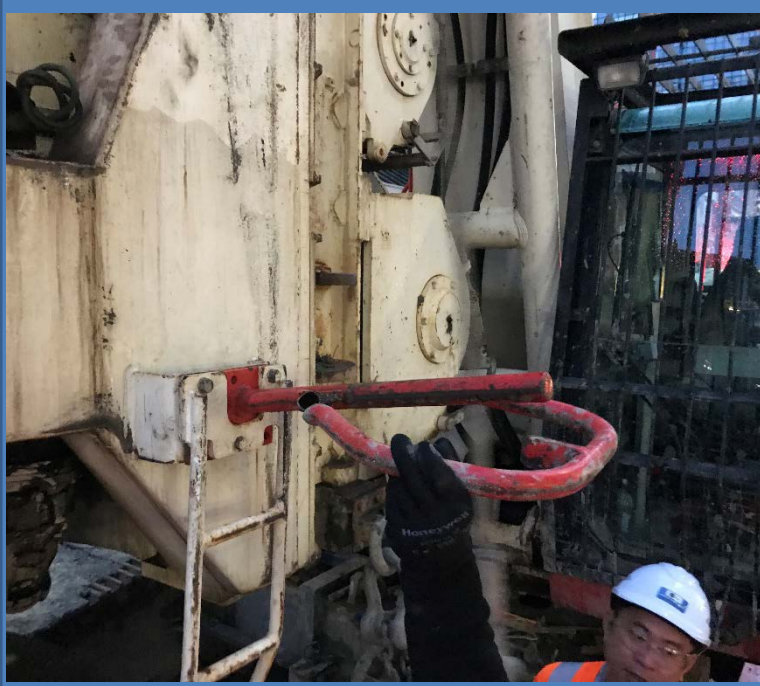


LA 016	Auxiliary line stowage bracket broke off piling rig	10.7.2020
---------------	--	------------------

WHAT HAPPENED?	<p>At 2.59 pm Monday 6th July. The Piling crew attached the Rigs auxiliary line to a casing and started to lift it with the line still secured behind the stowage bracket located on the rotary head of the rig. The Banksman would normally release the line from behind the bracket before it's attached to any load, this was overlooked in this instance.</p> <p>As the auxiliary rope came under tension to lift the casing the rope pulled the bracket off the rig sending it flying through the air 5 metres above ground level and dropped onto the site boundary fencing and then dropped into the public footpath. Fortunately No one was on the footpath.</p> <p>The Bracket weighs approx.1.5kg and is 300mm x 400 mm x 25 mm.</p>
-----------------------	---



2	Could this happen on your job? What can you do to prevent it?
	<ul style="list-style-type: none"> • Change the configuration of the auxiliary stowage with an alternative engineered solution. • Maintain suitable exclusion zones around plant to protect workers from falling objects. • Erect Mesh netting (or similar) above hoarding to protect public walkways.
3	Where can you get extra information and support?
	<ul style="list-style-type: none"> • Link Alliance Health and Safety Team • Industry guidance from the piling federation of Australia regarding auxiliary lines. • SBI Exclusion Zones around Heavy Plant & Equipment Guidelines and Best Practices

Distribution

Project Manager

Supervisor

H&S Team

Site information board

Action

Could This incident occur at this site

Yes /No

Actions taken to prevent occurrence?

Date Alert was reviewed by site crews

Confirmed by: (Manager)