

NZ Safety Alert

19 August 2022

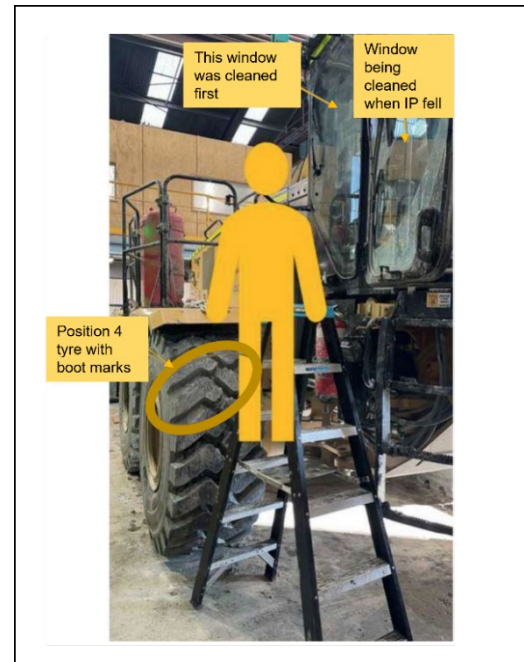
Let's work together to keep ourselves and our workers safe.

Fall from ladder causes head injury

A grader was undergoing maintenance repairs in the workshop. After being dropped off at the workshop to pick up the grader, an operator decided to clean the exterior windows of the grader.

While standing on the third rung of a 5-step A-frame ladder (less than 2m), the operator fell and struck their head on the concrete workshop floor.

The operator sustained a skull fracture, intercranial bleed and head laceration, and was transported to the hospital for further assessment and care.



[MinEx data](#) on incidents with the potential to cause harm over the 57 months to Mar 2022 show 16% (771) of all incidents involved falls of which 321 resulted from fall of people.

You need to ensure that:

1. No-one conducts work from a ladder.
2. Access and egress on mobile plant is fit-for-purpose to ensure workers are not injured climbing onto and off machines.
3. Hazards where workers can fall from height are identified in risk assessments, and adequate and effective controls are in place to ensure no-one is exposed to the fall hazards identified.

Know of an incident or near miss? Please share the learnings with us.