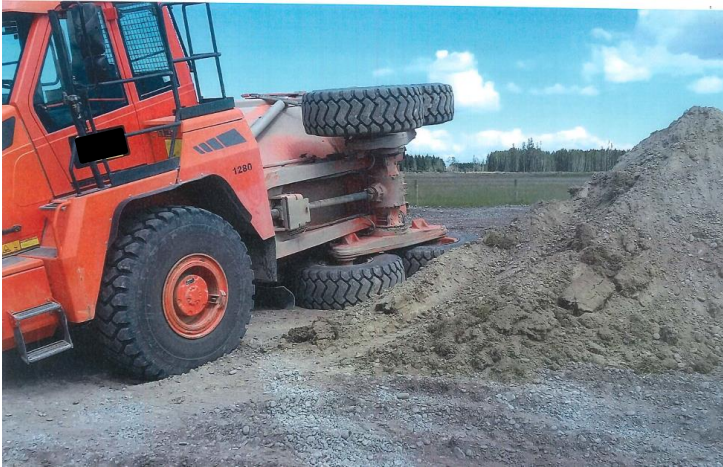


## Another ADT body rolls onto its side

---



While reversing to tip his load on a stockpile, the driver of an ADT was partially blinded by sunlight and reversed up onto the edge of the stockpile. This made the loaded body unstable and it tipped onto its side.

**In the NZ extractives sector there have been 106 incidents involving loss of control of vehicles, including ADTs, in the 12 months to June 2018.**

Later model ADTs are available with the following safety features, which you should consider when buying equipment:

- Roll-over protection cabins (ROPS)
- On-board weighing to avoid overloading
- Dump support, which has an angle sensor for side inclination. This will set off an alarm and/or will stop the trailer tipping if a preset angle is exceeded
- Hill assist to hold the truck on a slope.

We recommend that all sites review tasks that involve the use of articulated dump trucks, particularly on uneven, unstable or wet ground. You need to ensure that:

- **Operators are trained and competent to operate the equipment**
- **Particular care is taken when operating fully articulated vehicles on cross slopes**
- **Markers or spotters are used to guide reversing trucks around stockpiles**
- **Vehicles are not overloaded**
- **Seatbelts are worn at all times.**

Let's work together to keep ourselves and our workers safe.

7 September 2018