

Week ending 20 June 2018


This incident summary provides information on reportable incidents and safety advice for the NSW mining industry. To report an incident to the NSW Resources Regulator: phone 1300 814 609 24 hours a day, 7 days a week.

At a glance

High level summary of emerging trends and our recommendations to operators.

Type	Number
Reportable incident total	34
Summarised incident total	7

Summarised incidents

Incident type	Summary	Recommendations to industry
Dangerous incident SinNot- 2018/000971	<p>A workshop roof was damaged when an articulated truck hit it. After completing the pre-use inspection, the tub was still raised and the operator tried to drive through the workshop.</p> 	<p>Driving through confined areas should be avoided if alternatives exist.</p> <p>The risk of trucks operating with raised bodies should be addressed in the operational risk assessment and suitable controls put in place. The hierarchy of controls should be considered when developing controls.</p>
Serious injury SinNot-2018/00970	<p>Three workers were injured when the transport vehicle they were passengers in hit a sled. A load haul dump (LHD) vehicle was towing the sled out of the mine when the incident occurred. The LHD pulled to the side</p>	<p>Trailers and attachments should be checked so they are visible to operators of other vehicles.</p>

of the road to allow several transports driving into the mine to pass. As the second transport passed the sled, the left hand rear wheel hit the sled and the workers made contact with the roof of the vehicle.



Dangerous incident
SinNot- 2018/000964

A boilermaker suffered a fractured foot. The boilermaker was cutting a steel plate from an excavator bucket when the steel plate fell to the ground. The steel plate bounced on the ground and hit the boilermaker's foot.

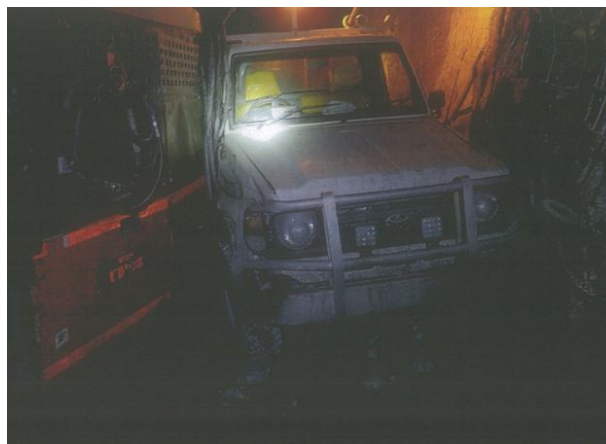
Work planning should include the requirements for loads to be supported during removal and lowered in a controlled fashion. This applies not only to tasks involving hot work but loads retained by mechanical means.



Dangerous incident
SinNot- 2018/000961

A collision occurred when a light vehicle rolled into a Jumbo. The light vehicle was parked in the decline. After leaving the vehicle it rolled forward and wedged between the Jumbo and the rib.

Ongoing monitoring of compliance with site park-up procedures should be included as part of the duties of supervisors.



Dangerous incident
SinNot- 2018/000959

A haul truck was trying to pass a grader when it slid towards the grader and made contact. The grader was cleaning a haul road following rain.

Operators should drive to conditions and always manage separation distances. When starting operations following rain, additional caution should be taken.



Dangerous incident
SinNot- 2018/000958

A haul truck was parked up and shutdown due to rain. The operator remained in the cab. After about an hour, the truck rolled forward 30 to 40 metres before the operator was able to stop it.

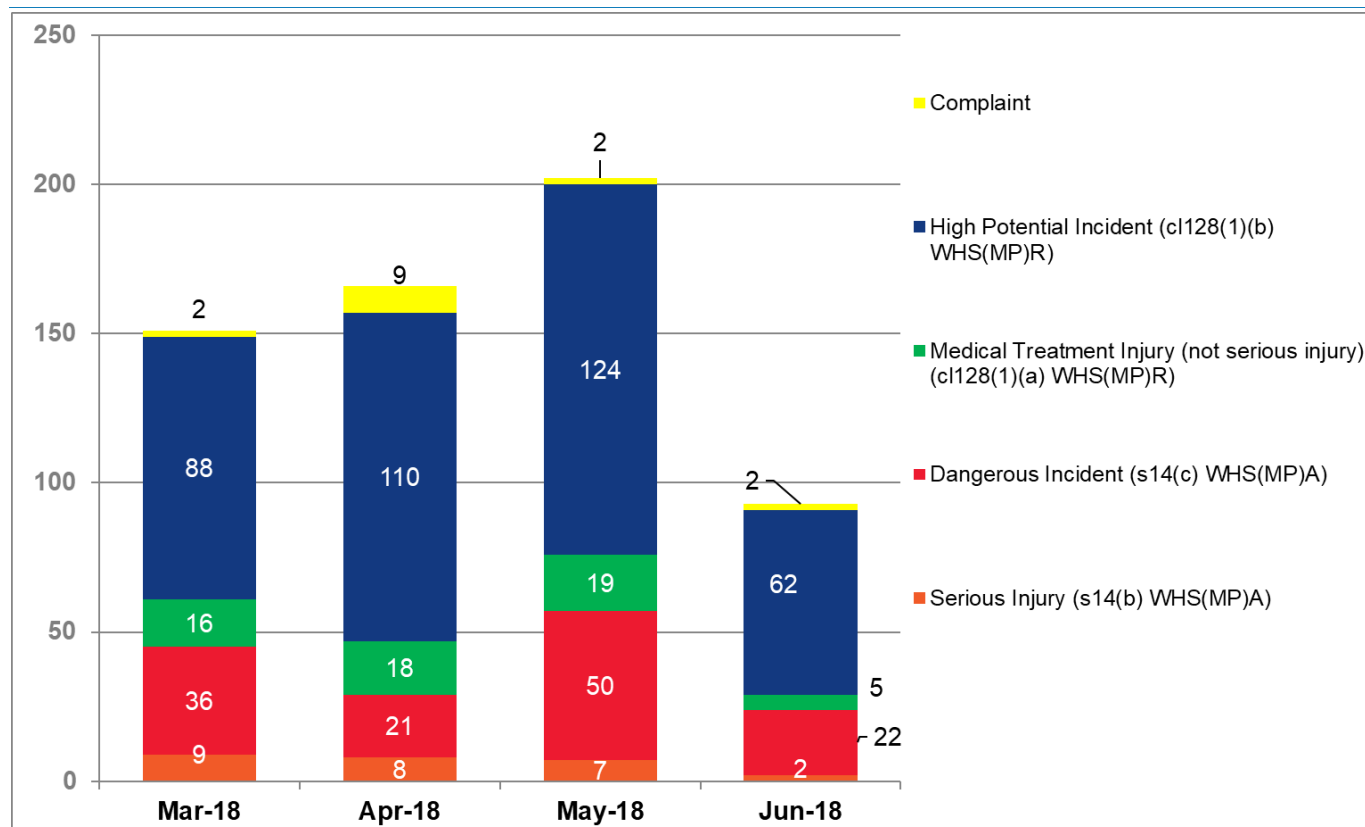
Park-up procedures should include requirements for situations where the vehicle is parked up but the operator remains in the cabin.

Dangerous incident
SinNot- 2018/000956

A worker suffered an electric shock. The worker was cleaning swarf from a magnetic base drill when the shock occurred. When inspected, an electrician identified 120 volts (AC).

An assessment should be carried out to determine the correct tool to be used for the conditions. Battery-powered tools and air tools should be considered.

Earthing requirements for mains-powered tools should be reviewed.



Note: While the majority of incidents are reported and recorded within a week of the event, some are notified outside this time period. The incidents in this report therefore have not necessarily occurred in a one week period. All newly recorded incidents, whatever the incident date, are reviewed by the Chief Inspector and senior staff each week. For more comprehensive statistical data refer to our annual performance measures reports.

Disclaimer

The information contained in this publication is based on knowledge and understanding at the time of writing. However, because of advances in knowledge, users are reminded of the need to ensure that information on which they rely is up to date and to check the currency of the information with the appropriate officer of NSW Department of Planning and Environment or the user’s independent advisor.

Office use only

CM9 reference DOC18/403909

Mine safety reference ISR 18-24

Date published 21 June 2018